




Motorhome Inspection Form

General Information

Make & Model	
Reg	
Miles or KM	
Miles/KM	
Transmission	
Engine size	
BHP	
BHP	
Berths	
Belts	
Lounge	
Bed options	
Further comments	

External Inspection

External Extras	
Any Damage found	
Further information	
Damage Photos	

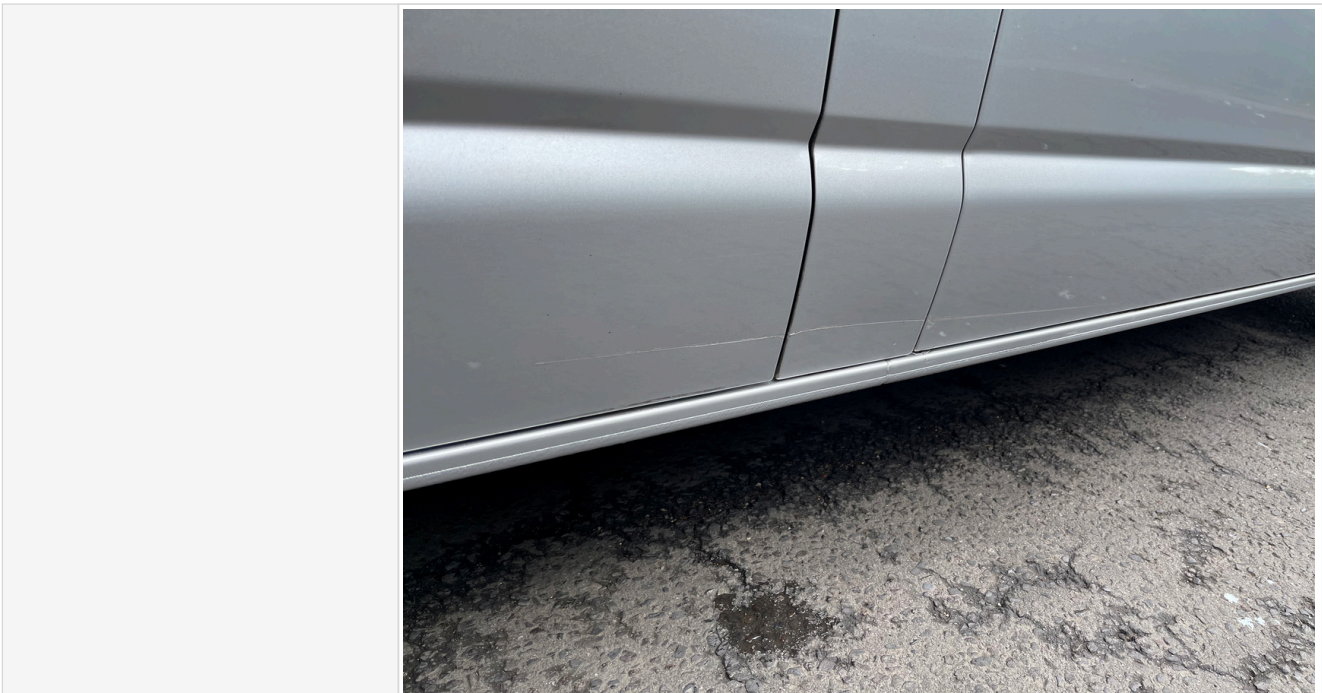


Motorhome Inspection Form





Motorhome Inspection Form



Window damage	
Windscreen	
Alloys	
Further information	
Multi Photo	
Garage/lockers	
Further comments	

Internal Inspection

Damp nearside (Visible/soft)	
Damp offside (Visible/soft)	
Damp rear (Visible/soft)	
Damp roof (Visible/soft)	
Damp floor (internal) (Visible/soft)	
Damage	
Internal Extras	
Carpets present	
Are all cushions correct including travel cushions	
Further comments	

Paperwork



Motorhome Inspection Form

V5 present	
Manuals present	
Engine Service Stamps	
Habitation Service reports	
Recent Hab Check Date	
Service photo(s)	



Motorhome Inspection Form

In receiving this form you are automatically agreeing with this acknowledgment. Whilst it would be nice to have a full AA style report and professional habitation check, it is not realistic and we are not trained to do so, so take all descriptions & reports as the assessors opinion only. All of our listed checks were opinion of the assessor before the date of the auction, conditions of the motorhome or caravan are expected to change in that time. Take into consideration fair wear and tear for the age of the motorhome. We do not test heating, gas, electric, water systems or accessories. All motorhomes are driven to the auction unless stated. MOT history & mileage checks are public record for the buyer to do their basic due diligence with. This is a trade auction only and must be treated as such. Bidding is bound by British Car Auction terms and conditions. Please visit <https://www.bca.co.uk> for auction terms and conditions. Bid at your own risk.