

## CMS MOTORHOME INSPECTION FORM

### General

CMS Motorhome Inspection	
Make & Model	
Reg Number (in capitals - no gap)	
HPI Clear	
Engine Size	
BHP	
Transmission	
Miles or KM	
Mileage	
Confirm miles (within 5,000)	
Is Mileage Warranted	
How many sets of engine keys	

### External Inspection

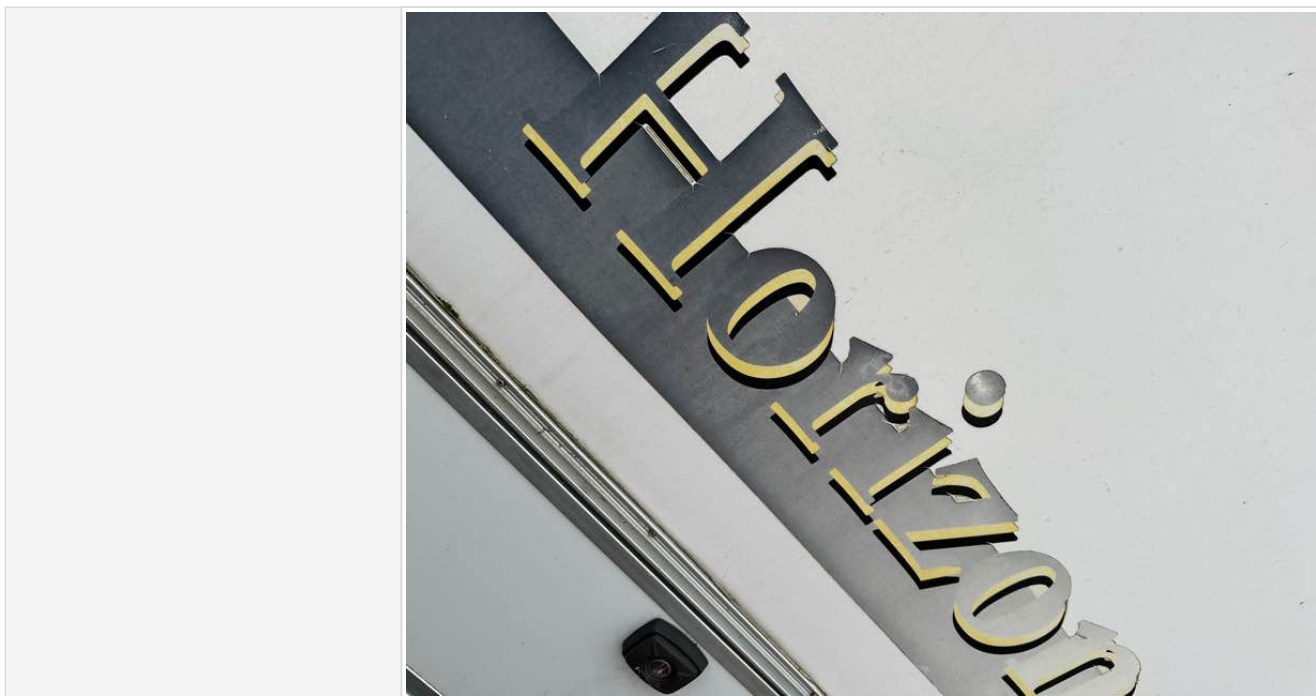
External Extras	
Any Other Extras	
Decals	
Further Info	

## CMS MOTORHOME INSPECTION FORM

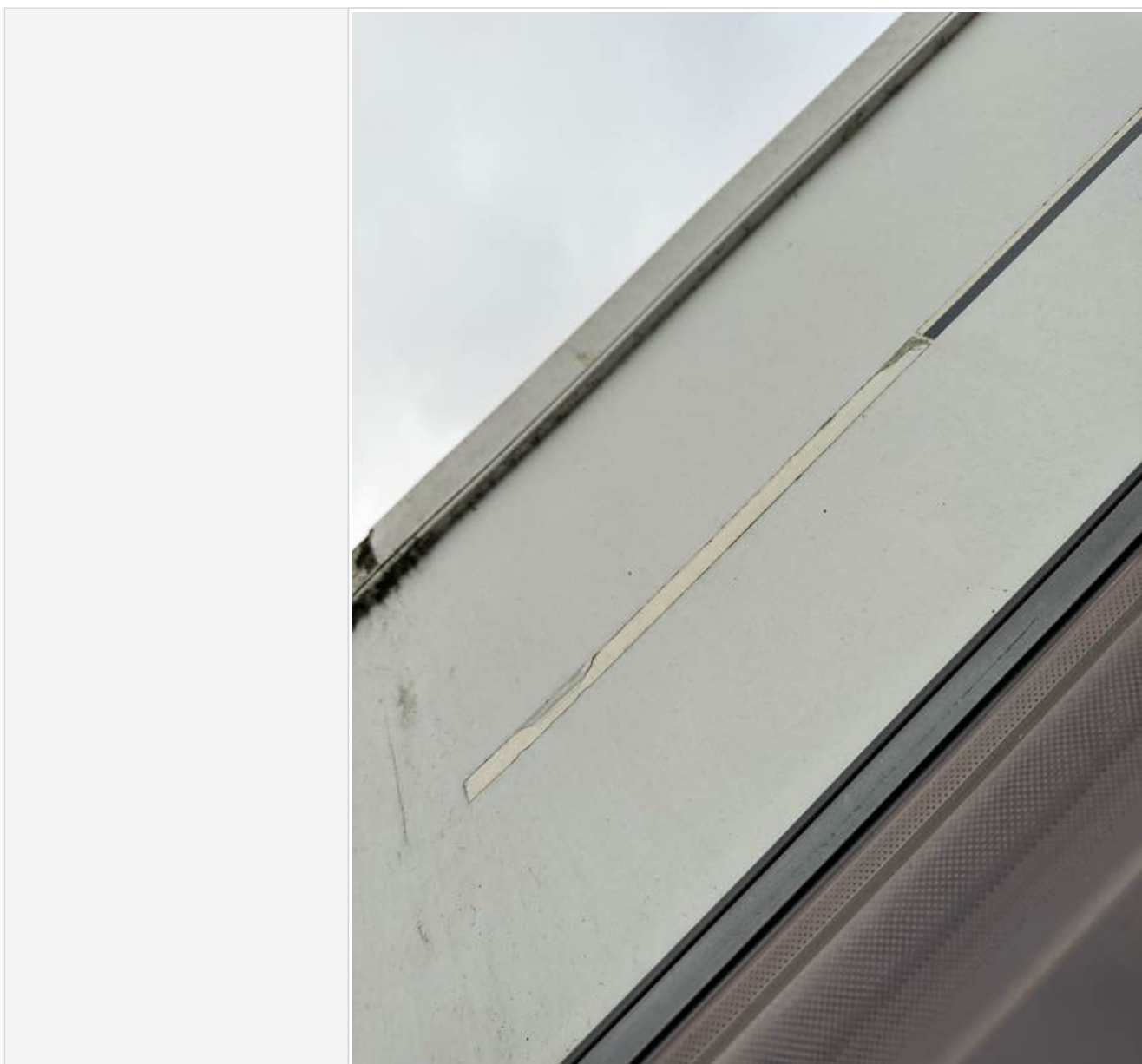
Decal Photos




## CMS MOTORHOME INSPECTION FORM



## CMS MOTORHOME INSPECTION FORM



## CMS MOTORHOME INSPECTION FORM

	
Any Damage Found	
Further Information	

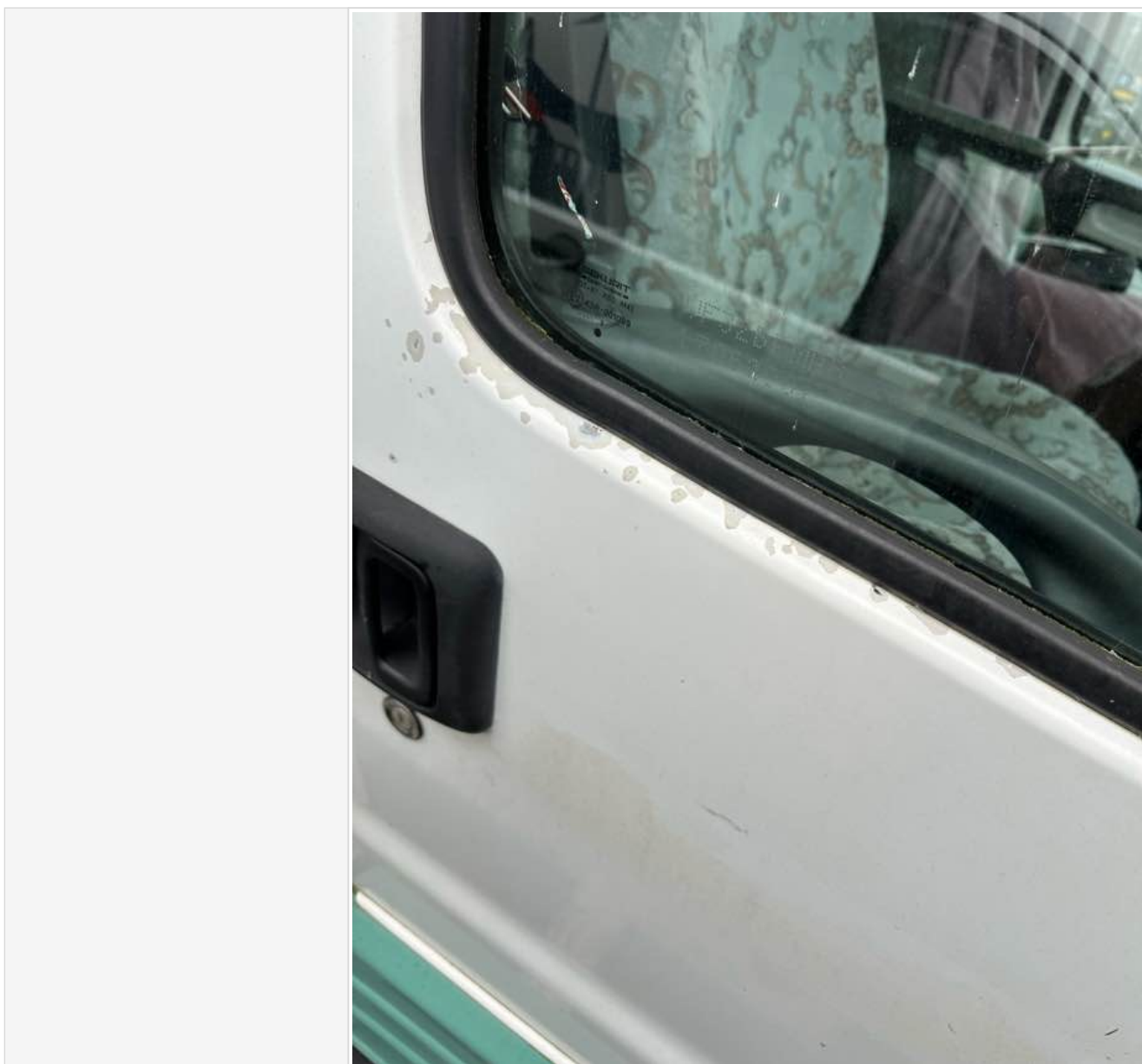
## CMS MOTORHOME INSPECTION FORM

### Damage Photos





## CMS MOTORHOME INSPECTION FORM

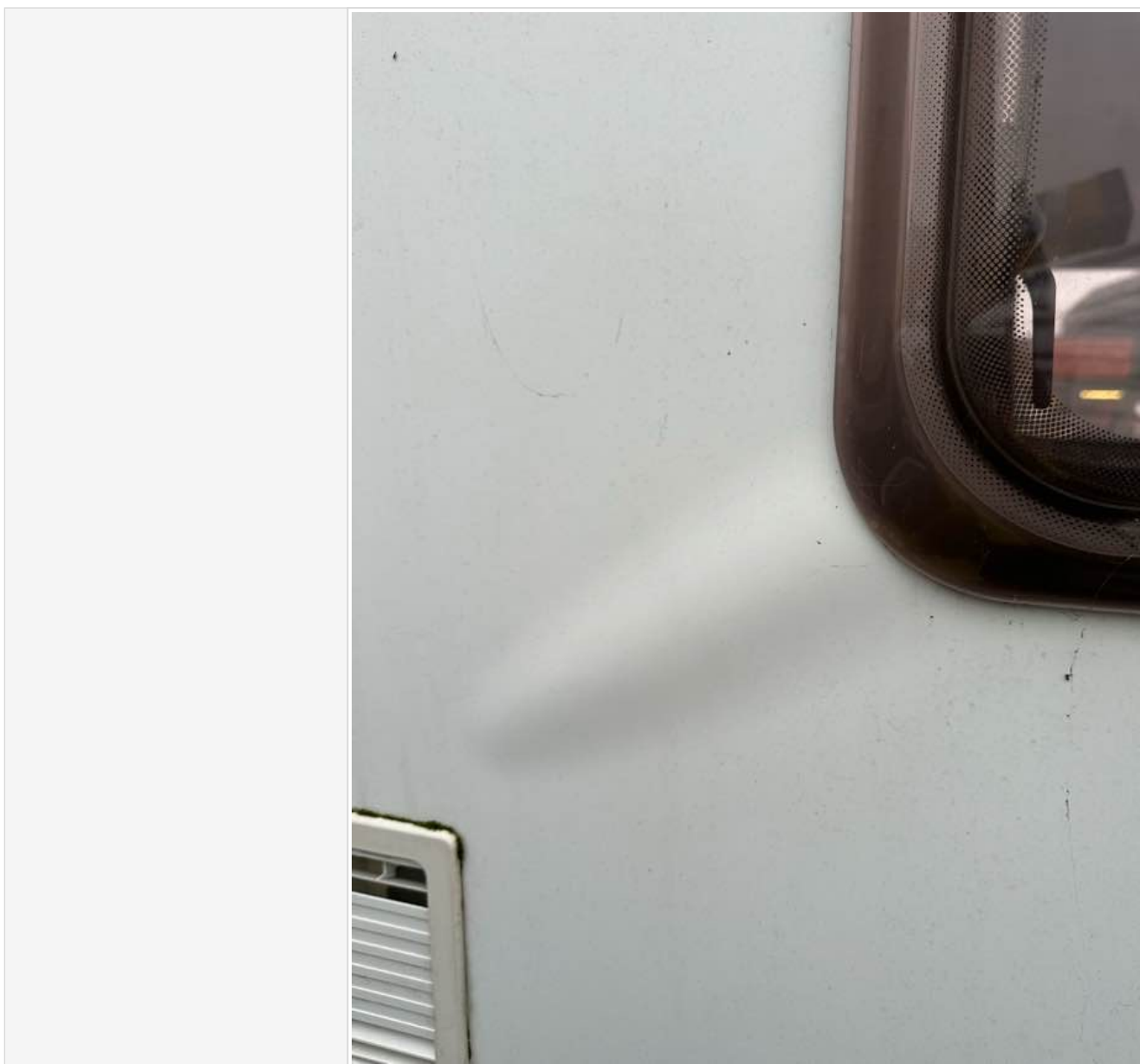


## CMS MOTORHOME INSPECTION FORM

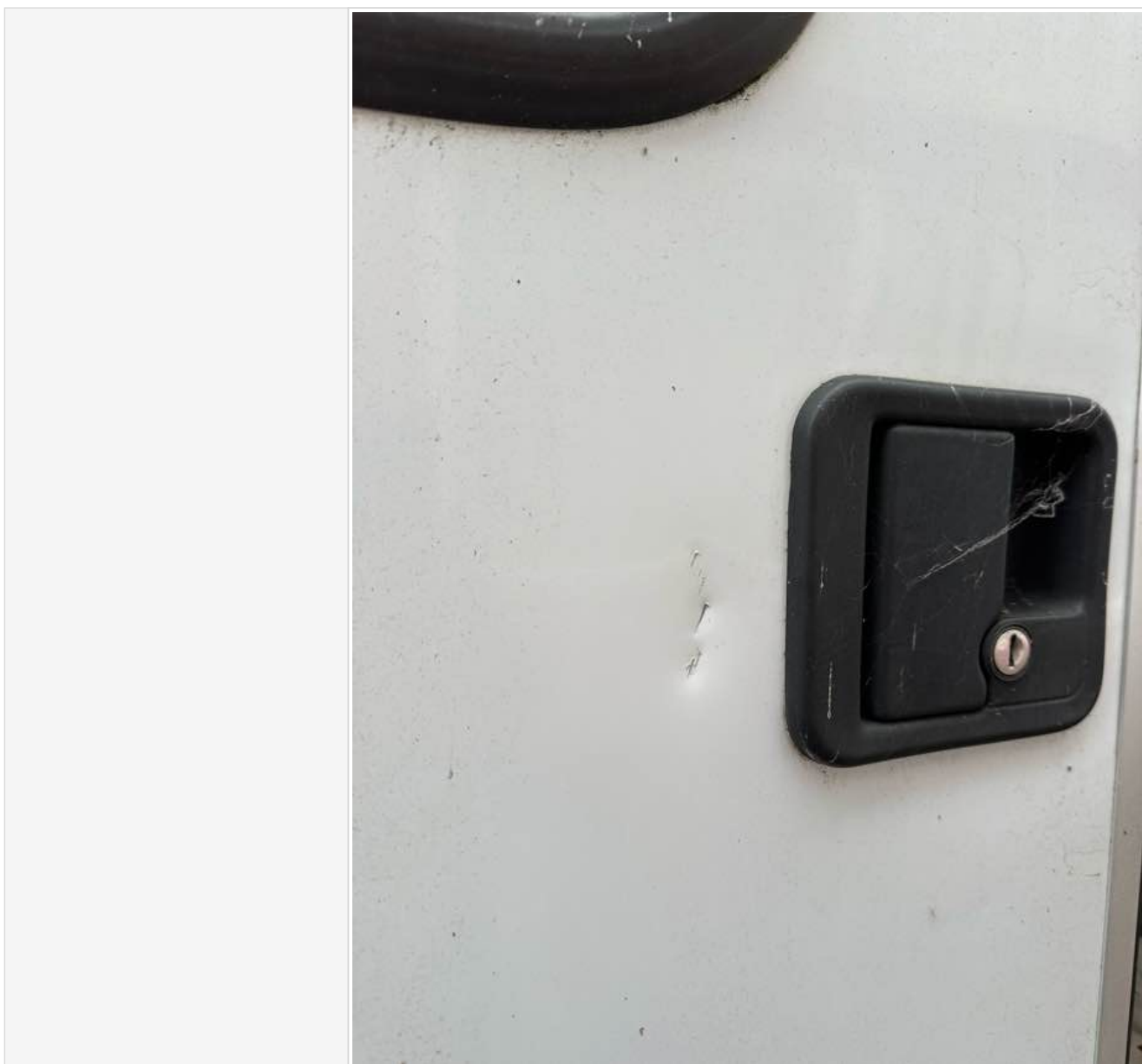




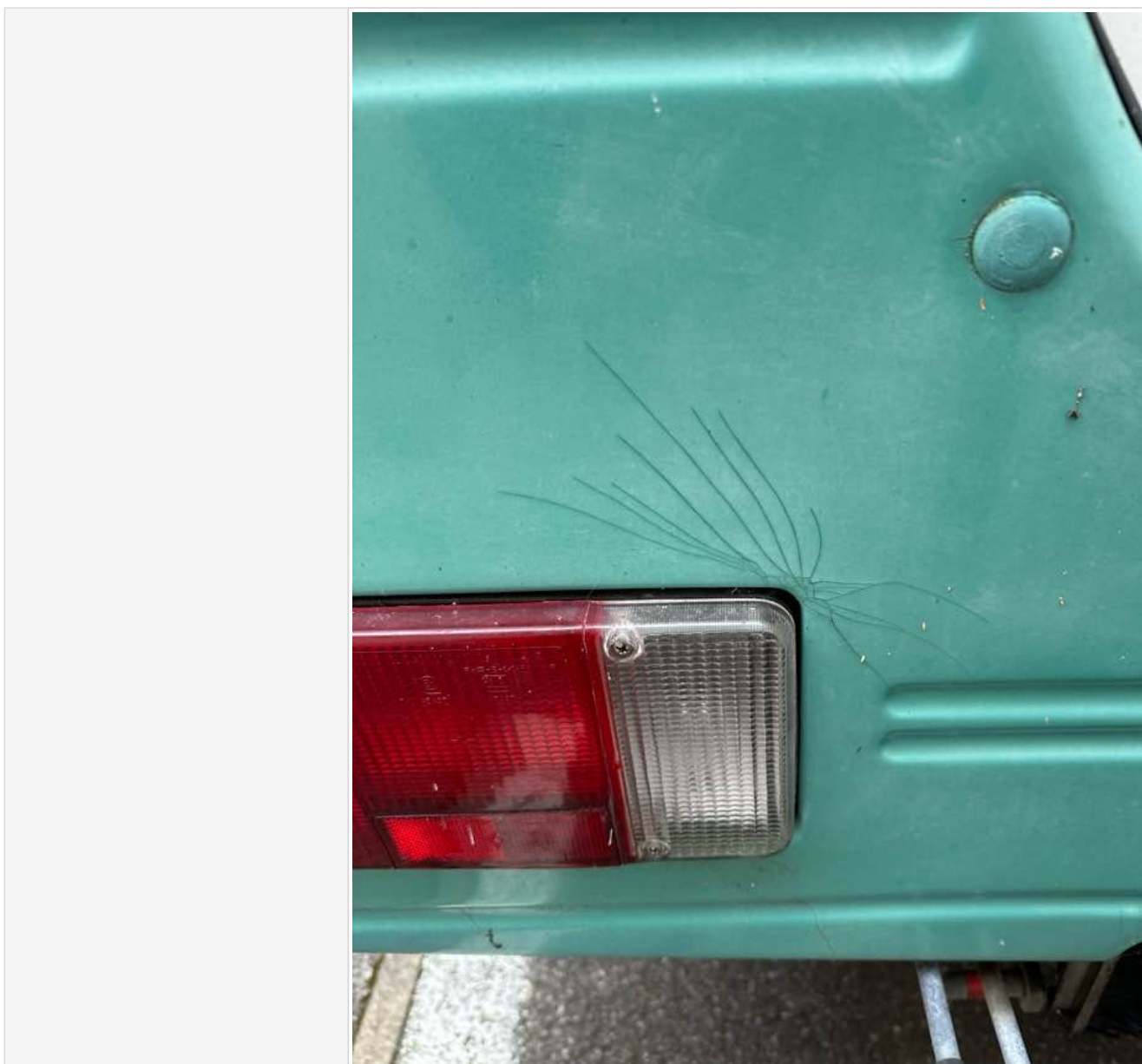
## CMS MOTORHOME INSPECTION FORM



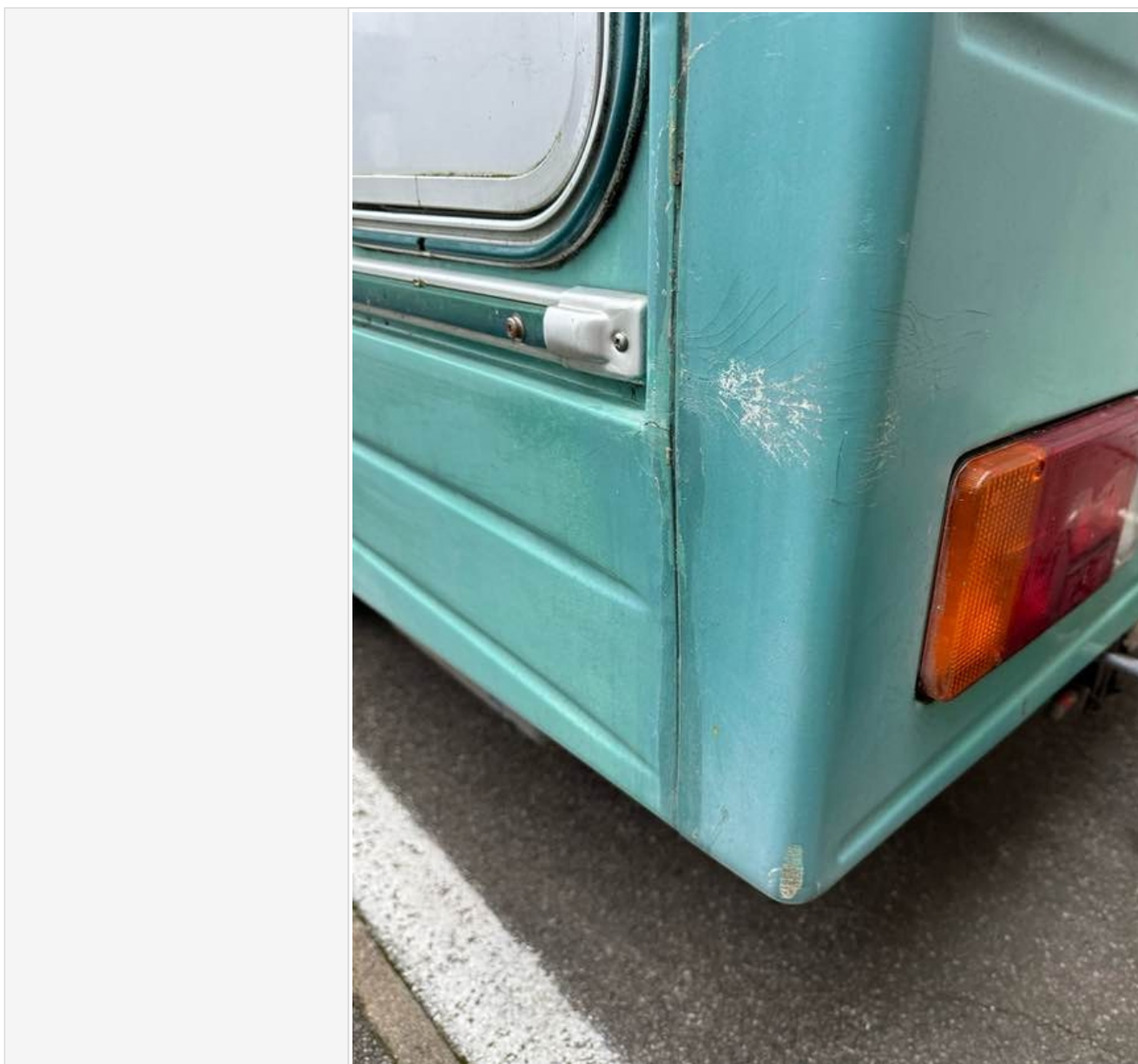
## CMS MOTORHOME INSPECTION FORM



## CMS MOTORHOME INSPECTION FORM



## CMS MOTORHOME INSPECTION FORM




## CMS MOTORHOME INSPECTION FORM





## CMS MOTORHOME INSPECTION FORM

	
Windscreen	
Alloy Wheels	
Electric Step	
Does self levelling work? (if applicable)	
Further comments	
Further Photo's	
Further info	

### Engine Bay

Are fluid levels correct? oil/coolant/brake fluid	
--	--



## CMS MOTORHOME INSPECTION FORM

More Info	
Engine bay check	
More info	

### Internal layout

Berths	
Belts	
Lounge	
Bed options	
Layout correct	
Further Comments	
Multi Photo	
Further info	

### Internal Inspection

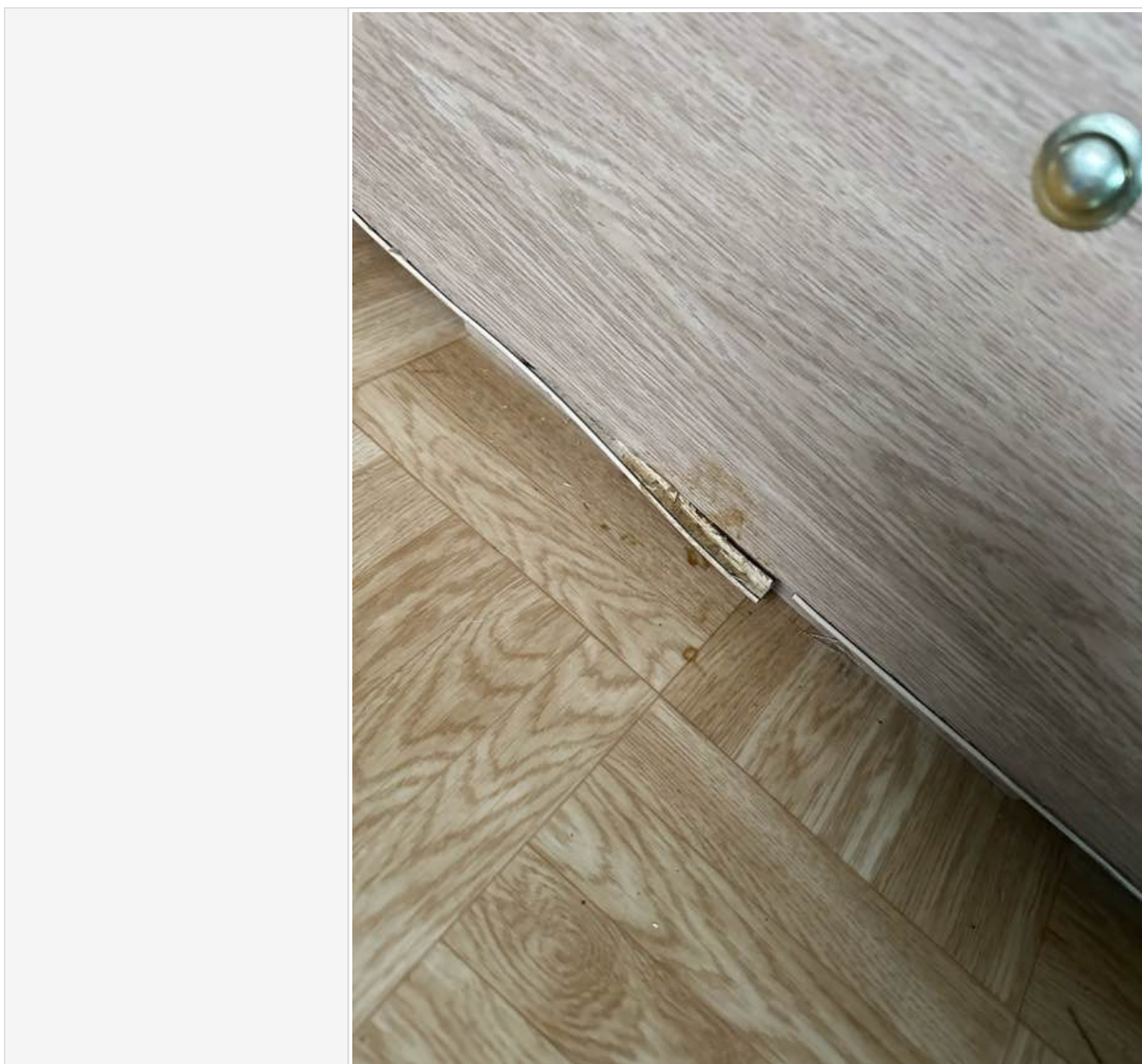
Internal Extras	
Other extras	
Do the electrics turn on	
More info	
Control Panel Damaged? Screen/buttons	
More Info	
Does the stereo turn on	
Smell or signs of smoking	
Are all cushions correct including travel cushions	
Is the boiler present	
Are overhead lockers empty/objects secure ready for travel?	
Damage	
Damage info	

## CMS MOTORHOME INSPECTION FORM

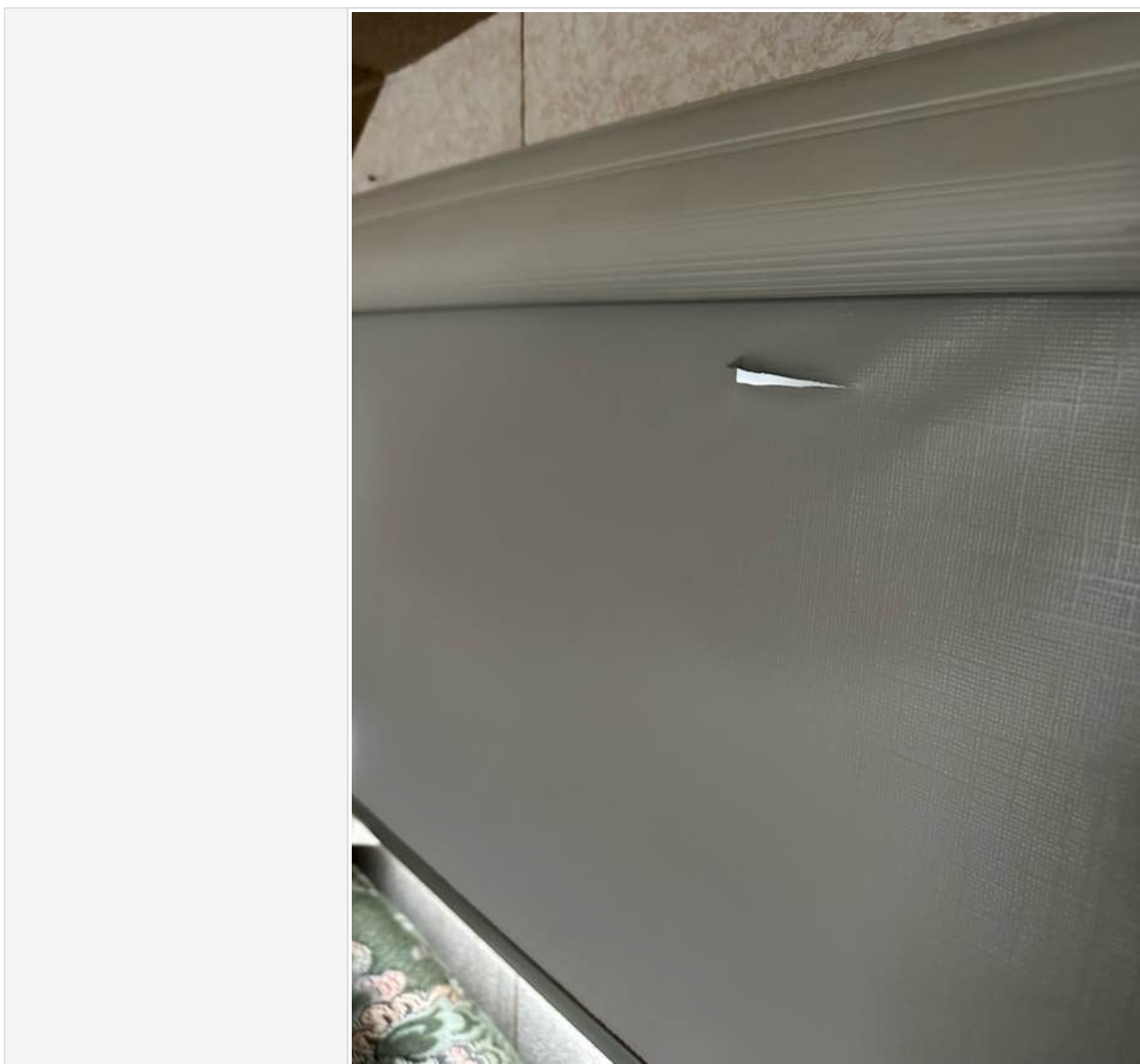
Damage photos



## CMS MOTORHOME INSPECTION FORM



## CMS MOTORHOME INSPECTION FORM



## CMS MOTORHOME INSPECTION FORM



### Damp inspection

Damp (visible/Soft)	
Damp info	
Photos of any damp	
Floor damp/spongey/damaged	
Further info	
Floor photos	

### Paperwork

V5 present	
------------	--



## CMS MOTORHOME INSPECTION FORM

Does the V5 vin match 2 x Vehicle vins	
Manuals present	
Engine service history	
Engine Service info	
Engine Service photos	
Habitation Service Reports	
Habitation service info	
Habitation service photos	

## Test drive

Test drive	
------------	--



## CMS MOTORHOME INSPECTION FORM

Further details	
Engine lights	
Further info	
Dashboard Ghosting	

### Sign off

Completed by	
Date/Time	
<p>In receiving this form you are automatically agreeing with this acknowledgment. Whilst it would be nice to have a full AA style report and professional habitation check, it is not realistic and we are not trained to do so, so take all descriptions &amp; reports as the assessors opinion only. All of our listed checks were opinion of the assessor before the date of the auction, conditions of the motorhome or caravan are expected to change in that time. Take into consideration fair wear and tear for the age of the motorhome. We do not test heating, gas, electric, water systems or accessories. All motorhomes are driven to the auction unless stated. MOT history &amp; mileage checks are public record for the buyer to do their basic due diligence with. This is a trade auction only and must be treated as such. Bidding is bound by British Car Auction terms and conditions. Please visit <a href="https://www.bca.co.uk">https://www.bca.co.uk</a> for auction terms and conditions. Bid at your own risk.</p>	