

CMS MOTORHOME INSPECTION FORM

General Information

Make & Model	Adria Matrix Platinum 670SL
Reg Number - NO GAP	HX67BZK
HPI Clear	Yes
VAT	No
Engine Size	2.3
BHP	130
Transmission	Manual
Miles or KM	Miles
Mileage	18905
Confirm miles (within 5,000)	Yes
Is Mileage Warranted	Yes
Engine Keys Count	
V5 present	Yes

Engine Bay

Fluid levels correct?	Yes
Oil/Coolant Contamination	No
Engine bay check	Pass

CMS MOTORHOME INSPECTION FORM

Mechanical Inspection

Brake Pedal Pressure Pass?	Yes
Handbrake Test Pass?	Yes
Static Gear Selection Pass?	Yes
Clutch Slip Test Pass?	Yes
Steering Noise	No
Engine noise	No

Test Drive

Test drive - 10 mins	Pass
Engine Lights	No
Engine Lights Info	
Dashboard Ghosting	No
Cruise Control Comment	

CMS MOTORHOME INSPECTION FORM

External Inspection

External Extras	LED daytime running lights, Front fog lights, Alloys, Awning, Parking sensors, Reversing camera, Bike Rack, Solar panel, Roof rack, Ladder, Air Suspension, BBQ point
Decals	Need attention
Decals Further Info	Mark on door
Any Damage Found	Yes
Damage Further Info	Trim out of line by gas locker on NS // NSR corner previous repair // both side of front bumper scuffed // OSR arch scuff // NS lower trim scuff
Windscreen	No damage
Alloy Wheels	Good
Alloy Wheels Further Info	
Tyres Illegal/Cracking/Out of Date	No
Tyre Further Info	
Damp Floor Underneath	No
Damp Further Info	
Electric Step	N/A
Self Levelling Work	N/A
Pop Top Canvas Damage	N/A

CMS MOTORHOME INSPECTION FORM

Internal Inspection

Internal Look Original	Yes
Berths	5
Belts	5
Bed Options	Bench Seats, Twin Beds Over Garage
Lounge Layout	Half Dinette
Layout Correct	Yes
Further Comments	No
Further Comments Info	
Internal Extras	cab A/C, Bluetooth, Cab blinds, Carpets, Cruise control, DAB radio, Part leather, Multi-function steering wheel, Oven, Sat nav, Traction control plus, Hill descent control, Tv(s)
Other Extras	
Electrics Turn On	Yes
Control Panel Damaged	No
Stereo Turn On	Yes
Smell or Signs of Smoking	No
Cushions Correct	Yes
Boiler Present	Yes
Overhead Lockers Ready	Yes

CMS MOTORHOME INSPECTION FORM

Internal Damage & Damp Check

Internal Damage	Yes
Damage Info	Leather scuff to drop down bed edge // mark above 5th belted seat
Damp Visible/Soft	No
Floor Damp/Spongy/Damaged	No
Manuals Present	Yes

Service History

Engine Service History	None
Cam Belt Changed	No
Habitation Service Reports	Partial
Habitation Info	
V5 Tested on DVLA	Yes
All Stages Completed	Yes
Completed By	Andrew Rowe
Sign-off Date	
Price Guide	

CMS MOTORHOME INSPECTION FORM - PHOTOS

V5 Document Photos

UNITED KINGDOM
REGISTRATION
CERTIFICATE

Owner & Vehicle
Licensing
Agency

European Community

1. Registered keeper
2. Data protection
3. Special notes (these notes cannot be removed)

Document reference number: 8227 504 1904

Buyer beware...
Do you know how to avoid being misled into buying a stolen vehicle?
For tips and advice go to www.gov.uk/check-before-buying-a-used-car

Photo 1

1. Registered keeper
2. Data protection
3. Special notes (these notes cannot be removed)

Document reference number: 8227 504 1904

Buyer beware...
Do you know how to avoid being misled into buying a stolen vehicle?
For tips and advice go to www.gov.uk/check-before-buying-a-used-car

Photo 2

1. Registered keeper
2. Data protection
3. Special notes (these notes cannot be removed)

Document reference number: 8227 504 1904

Buyer beware...
Do you know how to avoid being misled into buying a stolen vehicle?
For tips and advice go to www.gov.uk/check-before-buying-a-used-car

Photo 3

CMS MOTORHOME INSPECTION FORM - PHOTOS

Vehicle VIN Photos



Photo 1

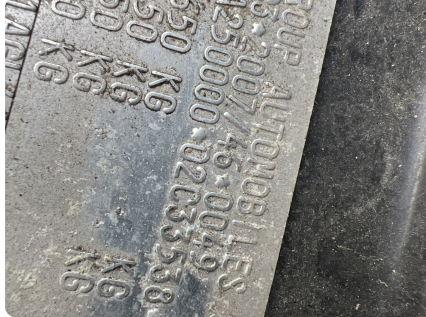


Photo 2

CMS MOTORHOME INSPECTION FORM - PHOTOS

External Damage Photos



Photo 1



Photo 2

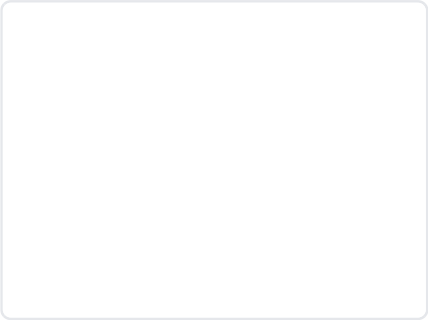


Photo 3

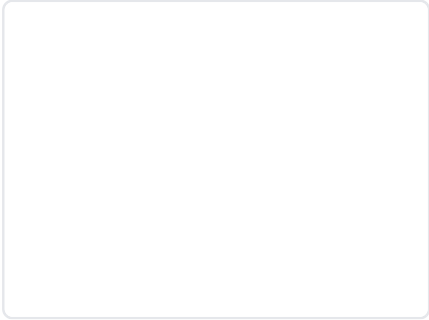


Photo 4

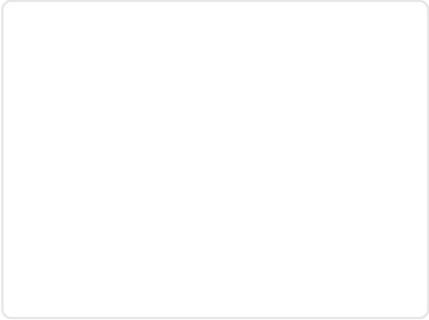


Photo 5

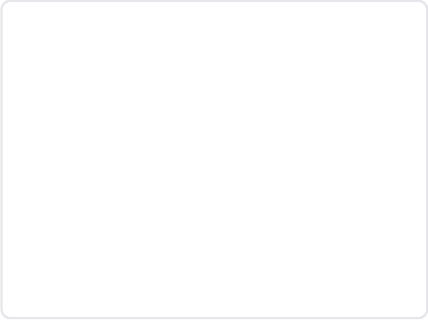


Photo 6

CMS MOTORHOME INSPECTION FORM - PHOTOS

Decal Photos

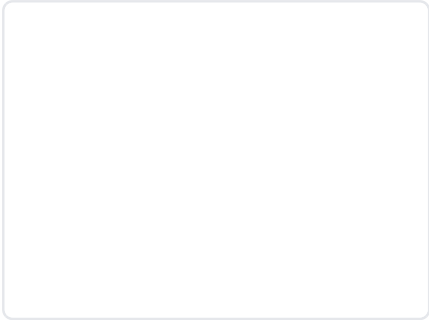


Photo 1

CMS MOTORHOME INSPECTION FORM - PHOTOS

Internal Damage Photos



Photo 1

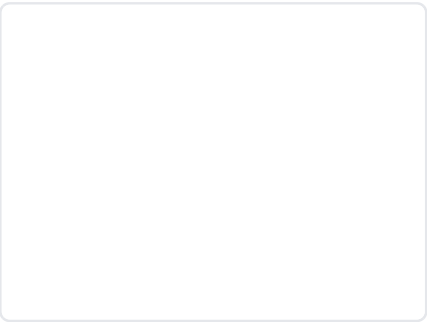


Photo 2