

CMS MOTORHOME INSPECTION FORM

General

| | |
|-----------------------------------|--|
| CMS Motorhome Inspection | |
| Make & Model | |
| Reg Number (in capitals - no gap) | |
| HPI Clear | |
| Engine Size | |
| BHP | |
| Transmission | |
| Miles or KM | |
| Mileage | |
| Confirm miles (within 5,000) | |
| Is Mileage Warranted | |
| How many sets of engine keys | |

External Inspection

| | |
|------------------|--|
| External Extras | |
| Any Other Extras | |
| Decals | |
| Further Info | |

CMS MOTORHOME INSPECTION FORM

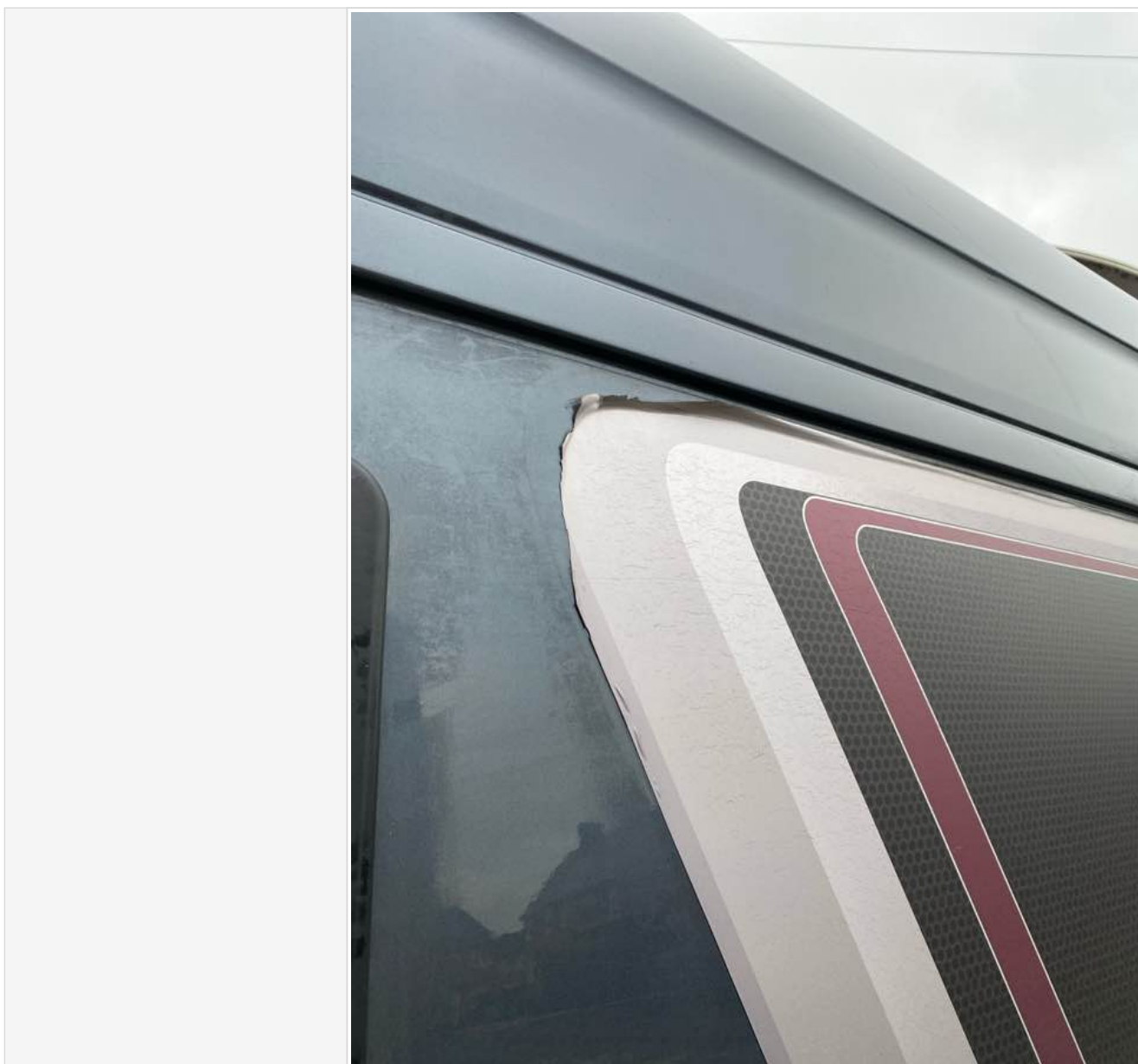
Decal Photos



CMS MOTORHOME INSPECTION FORM



CMS MOTORHOME INSPECTION FORM



CMS MOTORHOME INSPECTION FORM



Any Damage Found

Further Information

CMS MOTORHOME INSPECTION FORM

Damage Photos



CMS MOTORHOME INSPECTION FORM



CMS MOTORHOME INSPECTION FORM



| | |
|---|--|
| Windscreen | |
| Alloy Wheels | |
| Electric Step | |
| Does self levelling work? (if applicable) | |
| Further comments | |
| Further Photo's | |
| Further info | |

Engine Bay

| | |
|--|--|
| Are fluid levels correct? oil/coolant/brake fluid | |
|--|--|

CMS MOTORHOME INSPECTION FORM

| | |
|------------------|--|
| More Info | |
| Engine bay check | |
| More info | |

Internal layout

| | |
|------------------|--|
| Berths | |
| Belts | |
| Lounge | |
| Bed options | |
| Layout correct | |
| Further Comments | |
| Multi Photo | |
| Further info | |

Internal Inspection

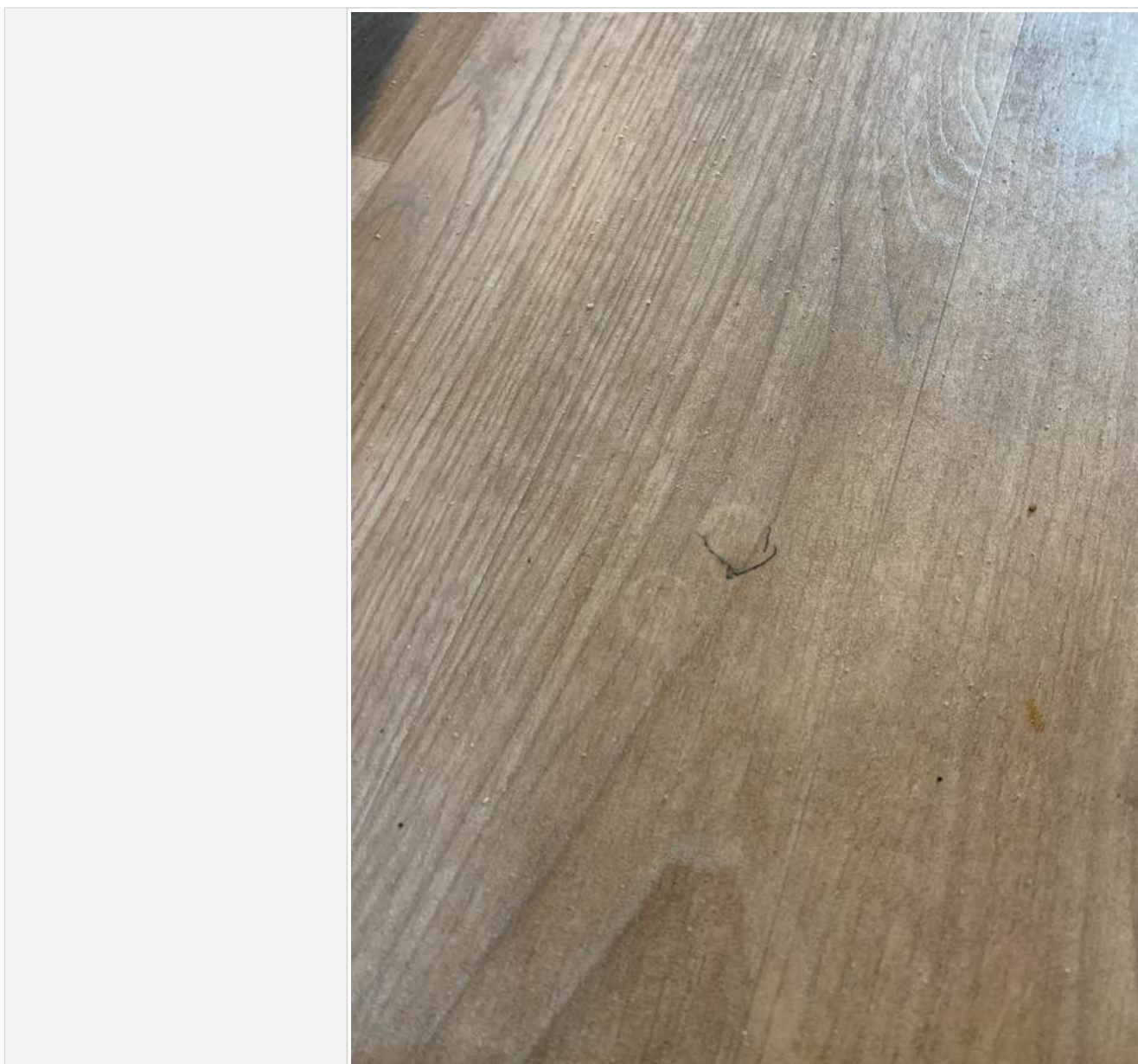
| | |
|---|--|
| Internal Extras | |
| Other extras | |
| Do the electrics turn on | |
| More info | |
| Control Panel Damaged? Screen/buttons | |
| More Info | |
| Does the stereo turn on | |
| Smell or signs of smoking | |
| Are all cushions correct including travel cushions | |
| Is the boiler present | |
| Are overhead lockers empty/objects secure ready for travel? | |
| Damage | |
| Damage info | |

CMS MOTORHOME INSPECTION FORM

Damage photos



CMS MOTORHOME INSPECTION FORM



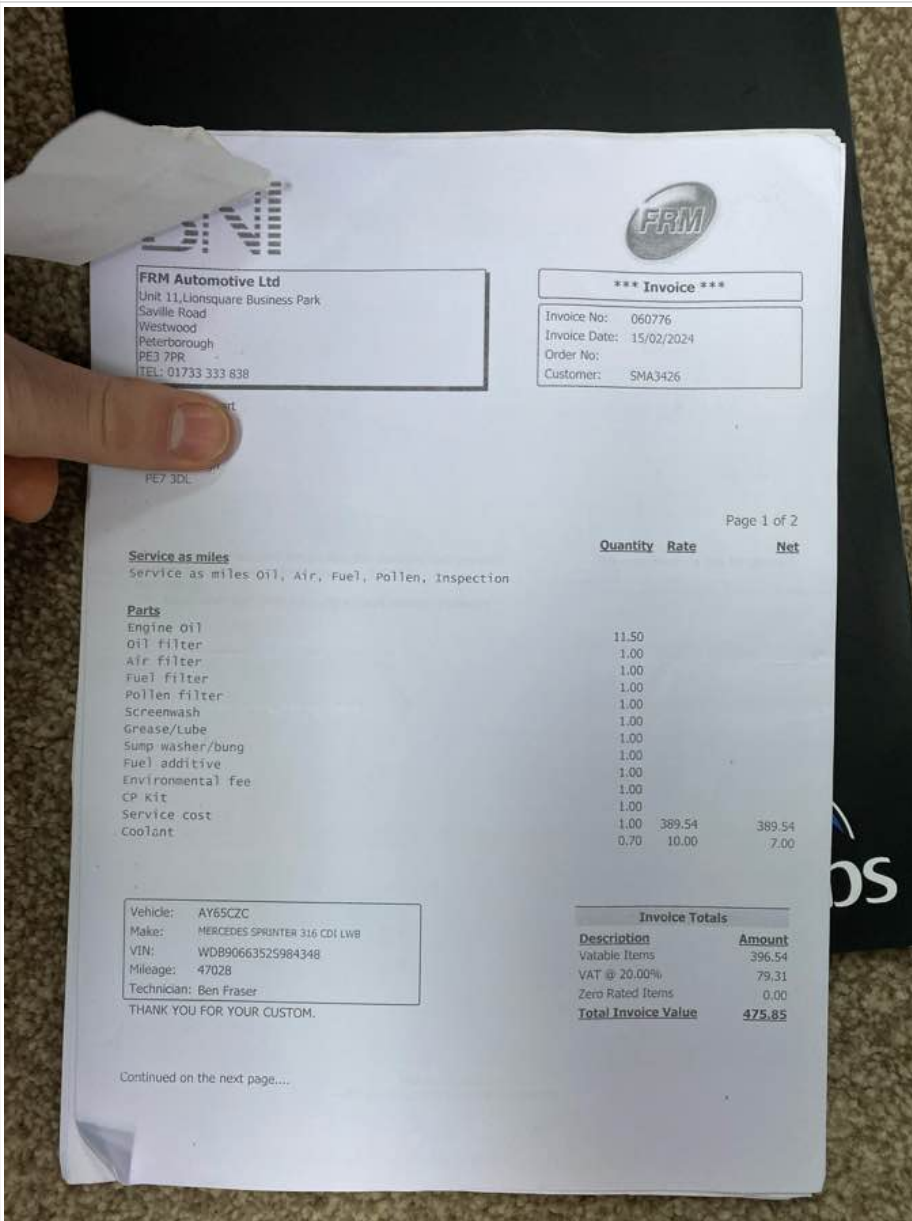
Damp inspection

| | |
|----------------------------|--|
| Damp (visible/Soft) | |
| Damp info | |
| Photos of any damp | |
| Floor damp/spongey/damaged | |
| Further info | |
| Floor photos | |

Paperwork

| | |
|------------|--|
| V5 present | |
|------------|--|

CMS MOTORHOME INSPECTION FORM

| | |
|--|---|
| Does the V5 vin match 2 x Vehicle vins | |
| Manuals present | |
| Engine service history | |
| Engine Service info | |
| Engine Service photos |  |
| Habitation Service Reports | |
| Habitation service info | |
| Habitation service photos | |
| <h3>Test drive</h3> | |
| Test drive | |

CMS MOTORHOME INSPECTION FORM

| | |
|--------------------|--|
| Further details | |
| Engine lights | |
| Further info | |
| Dashboard Ghosting | |

Sign off

| | |
|---|--|
| Completed by | |
| Date/Time | |
| <p>In receiving this form you are automatically agreeing with this acknowledgment. Whilst it would be nice to have a full AA style report and professional habitation check, it is not realistic and we are not trained to do so, so take all descriptions & reports as the assessors opinion only. All of our listed checks were opinion of the assessor before the date of the auction, conditions of the motorhome or caravan are expected to change in that time. Take into consideration fair wear and tear for the age of the motorhome. We do not test heating, gas, electric, water systems or accessories. All motorhomes are driven to the auction unless stated. MOT history & mileage checks are public record for the buyer to do their basic due diligence with. This is a trade auction only and must be treated as such. Bidding is bound by British Car Auction terms and conditions. Please visit https://www.bca.co.uk for auction terms and conditions. Bid at your own risk.</p> | |